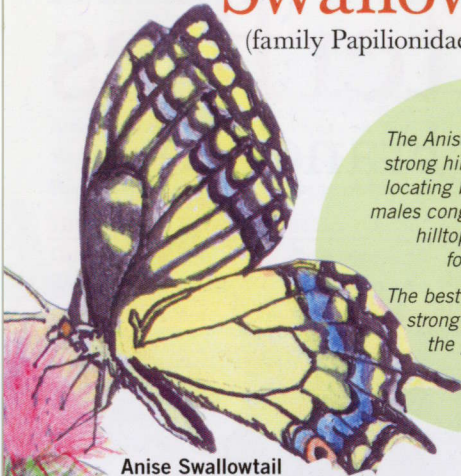


the Swallowtails

(family Papilionidae)

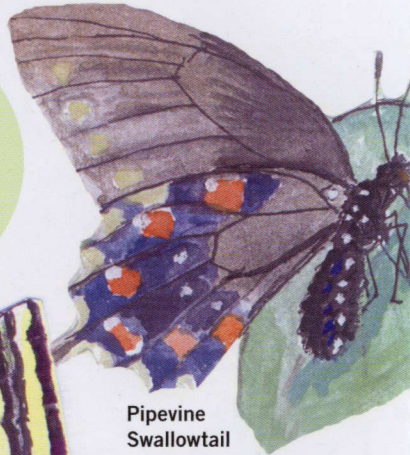


Anise Swallowtail

The Anise Swallowtail is a strong hilltopper—a mate-locating behavior in which males congregate on exposed hilltops and search for females.

The best place to see this strong flyer is braving the powerful gusts of wind on Twin Peaks.

The Pipevine Swallowtail is generally only found at Yerba Buena Island and Lake Merced due to the rarity of its host plant, the Dutchman's Pipevine.



Pipevine Swallowtail



Western Tiger Swallowtail

The Western Swallowtail is the largest butterfly in San Francisco. It uses willow riparian habitat and in San Francisco it has adapted to use the London Plane Tree. It can now be seen floating down Market Street.

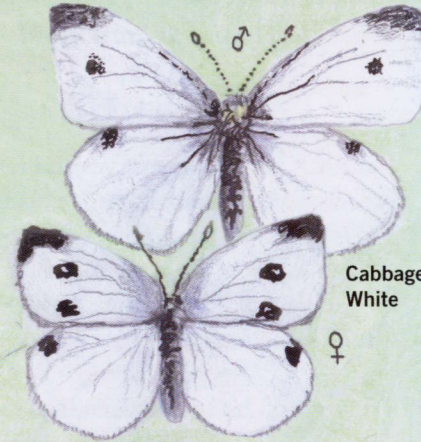
the Whites

(family Pieridae)



Large Marble

Based on butterfly surveys, Cabbage Whites are the most common butterflies in San Francisco.



Cabbage White

underwing

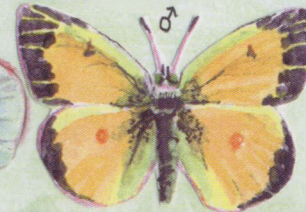
the Sulfurs

(family Pieridae)

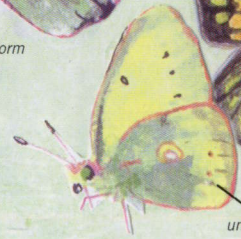


white form

Orange Sulfur



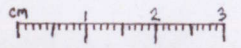
yellow form



underwing

the Blues

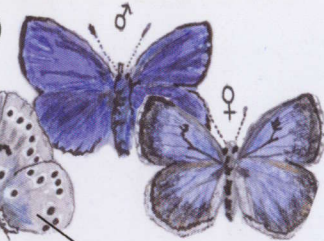
(family Lycaenidae)



The Pygmy Blue is the smallest butterfly in North America and flies along the SE bay shoreline.



Western Pygmy Blue



Silvery Blue

underwing



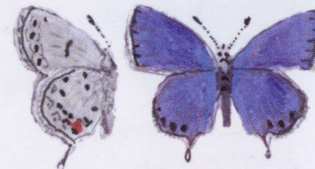
Mission Blue

You can find the federally endangered Mission Blue at the Twin Peaks Natural Area.



Eastern Tailed Blue

2 red dots



Western Tailed Blue

1 red dot



underwing

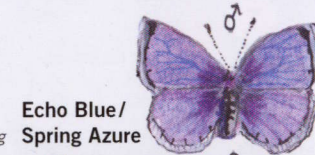
Acmon Blue



spring form



fall form



Echo Blue/
Spring Azure

the Hairstreaks

(family Lycaenidae)

See the Green Hairstreak at one of its last remaining habitats in the Presidio or in the Outer Sunset on Hawk Hill.



Gray Hairstreak



Green Hairstreak